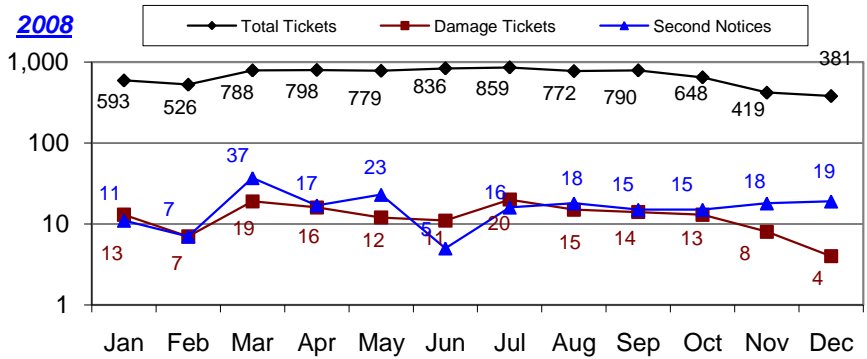


BROOMFIELD COUNTY

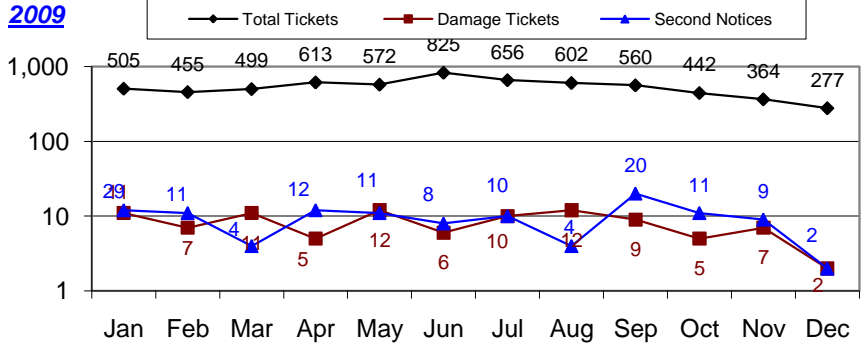
Month	Total Tickets	Damage Tickets	Second Notices
January	593	13	11
February	526	7	7
March	788	19	37
April	798	16	17
May	779	12	23
June	836	11	5
July	859	20	16
August	772	15	18
September	790	14	15
October	648	13	15
November	419	8	18
December	381	4	19

2008



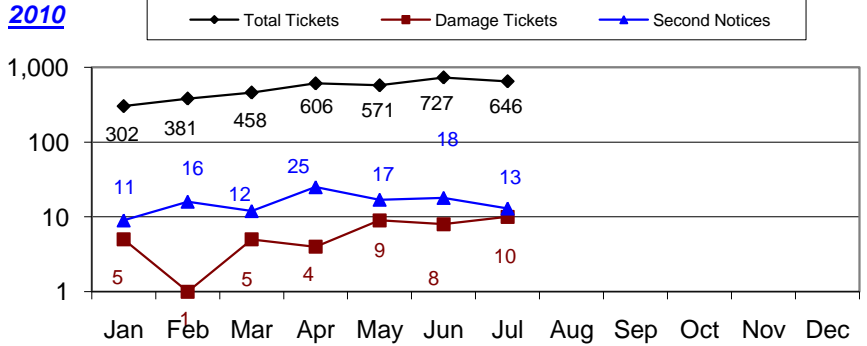
2008 Year-To-Date	8,189	152	201
January	505	11	12
February	455	7	11
March	499	11	4
April	613	5	12
May	572	12	11
June	825	6	8
July	656	10	10
August	602	12	4
September	560	9	20
October	442	5	11
November	364	7	9
December	277	2	2

2009



2009 Year-To-Date	6,370	97	114
January	302	5	9
February	381	1	16
March	458	5	12
April	606	4	25
May	571	9	17
June	727	8	18
July	646	10	13
August			
September			
October			
November			
December			

2010



2010 Year-To-Date	3,691	42	110
-------------------	-------	----	-----